

# Certificate of Analysis



Client:  
**Path Peptides**

Laboratory:  
**TrustPointe Analytics LLC**  
1743 142nd Ave Suite 4  
Dorr, MI 49323



Verify at [TrustPointeLIMS.com](https://TrustPointeLIMS.com)  
Key=TTTU6WZR4FBC

## Sample Information

Sample Name	BPC-157 5mg 1 vial	Client SID	Blue Cap	Published	2025-08-04 15:29
-------------	--------------------	------------	----------	-----------	------------------

## Results

Sample ID	SPL-1463
TM-1006 BPC-157 Assay	6.53 mg
TM-1006 BPC-157 ID by RT	1.00
TM-1006 BPC-157 ID by Spectral	999
TM-1006 BPC-157 Purity	99.604 %
TM-1006 BPC-157 Coelution Control	995
TM-1006 BPC-157 System Suit	1.5 %RSD

## Approvals

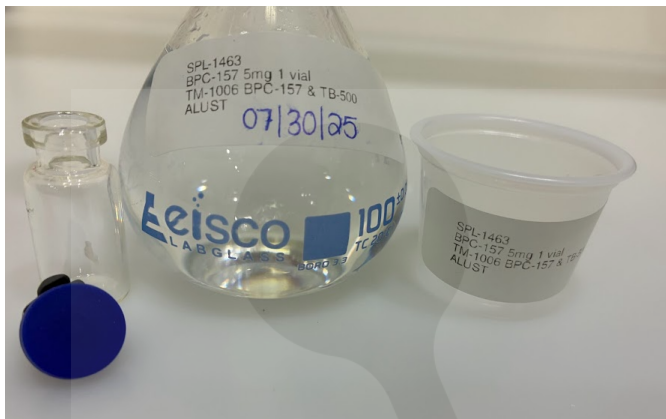
Created by

**Ashlee Lust**  
President

Reviewed by

**Joshua Lust**  
Managing Director

## Attachments for SPL-1463



Attachment for SPL-1463

Filename: SPL-1463\_correctedheader.png

# Certificate of Analysis



Client:  
**Path Peptides**

Laboratory:  
**TrustPointe Analytics LLC**  
1743 142nd Ave Suite 4  
Dorr, MI 49323



Scan or Click to Verify

## Sample Information

<b>Sample Name</b>	BPC-157 10mg 1 Vial	<b>Client SID</b>	BPC 157 10mg	<b>Published</b>	2025-06-20 15:47
--------------------	---------------------	-------------------	--------------	------------------	------------------

## Results

<b>Sample ID</b>	SPL-1189
TM-1006 BPC-157 Assay	11.86 mg
TM-1006 BPC-157 ID by RT	1.00
TM-1006 BPC-157 ID by Spectral	1000
TM-1006 BPC-157 Purity	99.603 %
TM-1006 BPC-157 Coelution Control	998
TM-1006 BPC-157 System Suit	0.8 %RSD

## Approvals

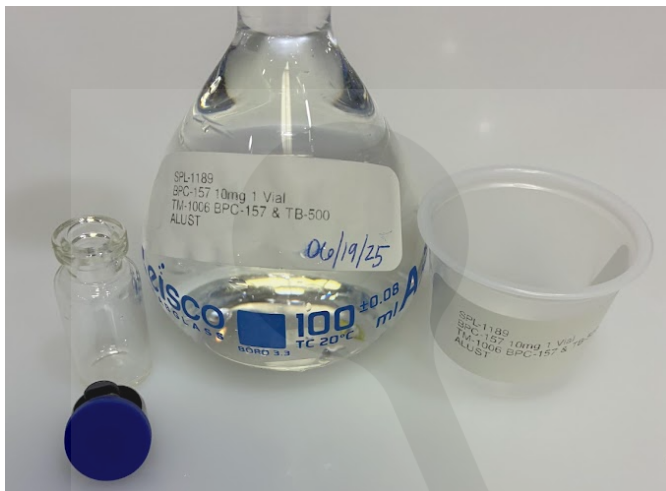
Created by

**Ashlee Lust**  
President

Reviewed by

**Joshua Lust**  
Managing Director

Attachments for SPL-1189



Attachment for SPL-1189  
Filename: SPL-1189.png

# Certificate of Analysis



Client:  
**Path Peptides**

Laboratory:  
**TrustPointe Analytics LLC**  
1743 142nd Ave Suite 4  
Dorr, MI 49323



Verify at [TrustPointeLIMS.com](https://TrustPointeLIMS.com)  
Key=TTTU6WZR4FBC

## Sample Information

Sample Name	BPC-157 5mg 1 vial	Client SID	Blue Cap	Published	2025-08-04 15:29
-------------	--------------------	------------	----------	-----------	------------------

## Results

Sample ID	SPL-1463
TM-1006 BPC-157 Assay	6.53 mg
TM-1006 BPC-157 ID by RT	1.00
TM-1006 BPC-157 ID by Spectral	999
TM-1006 BPC-157 Purity	99.604 %
TM-1006 BPC-157 Coelution Control	995
TM-1006 BPC-157 System Suit	1.5 %RSD

## Approvals

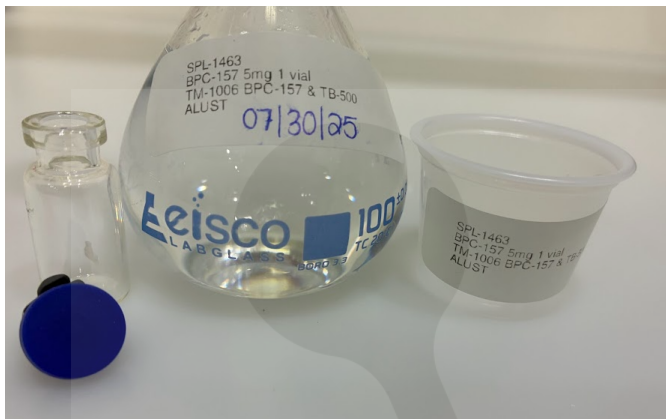
Created by

**Ashlee Lust**  
President

Reviewed by

**Joshua Lust**  
Managing Director

## Attachments for SPL-1463



Attachment for SPL-1463

Filename: SPL-1463\_correctedheader.png

# Certificate of Analysis



Client:  
**Path Peptides**

Laboratory:  
**TrustPointe Analytics LLC**  
1743 142nd Ave Suite 4  
Dorr, MI 49323



Scan or Click to Verify

## Sample Information

<b>Sample Name</b>	BPC-157 15mg 1 Vial *RUSH*	<b>Client SID</b>	Lot: 258061715	<b>Published</b>	2025-06-27 12:29
--------------------	-------------------------------	-------------------	-------------------	------------------	---------------------

## Results

<b>Sample ID</b>	<a href="#">SPL-1238</a>
TM-1006 BPC-157 Assay	14.82 mg
TM-1006 BPC-157 ID by RT	1.00
TM-1006 BPC-157 ID by Spectral	999
TM-1006 BPC-157 Purity	99.681 %
TM-1006 BPC-157 Coelution Control	998
TM-1006 BPC-157 System Suit	1.0 %RSD

## Approvals

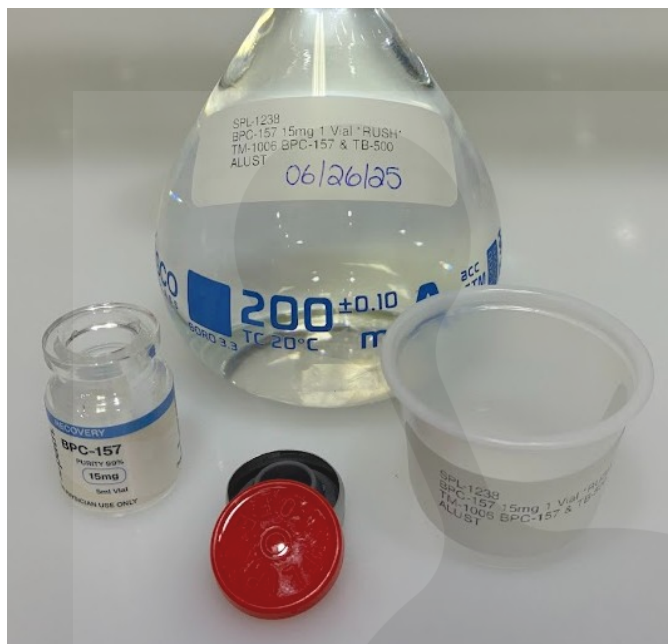
Created by

**Ashlee Lust**  
President

Reviewed by

**Joshua Lust**  
Managing Director

Attachments for SPL-1238



Attachment for SPL-1238  
Filename: SPL-1238.jpg